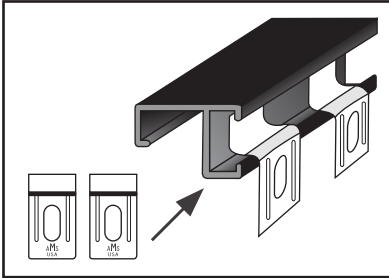


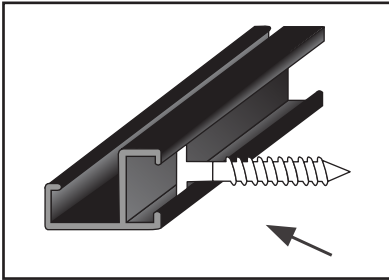


SECURITY HARDWARE



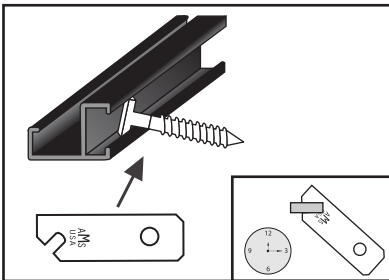
1 Locate frame on wall. Position brackets for even spacing along the top frame extrusion, to support the frame.

Attach brackets to wall using 2 short anchors and 1" screws. Place frame on brackets, insuring proper support. Brackets will slide directly into the frame extrusion's channel; no "plate" is required for metal frames.

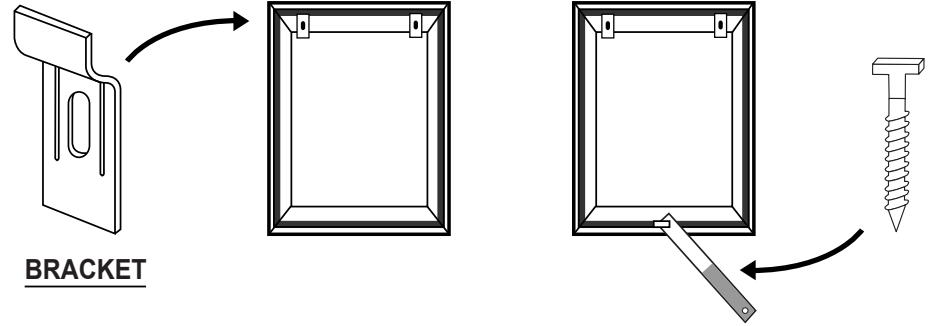
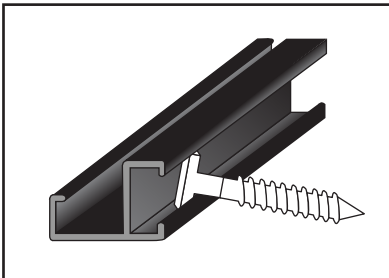


2 Now, find the exact center of the bottom of the frame (width and length), and mark this spot on the wall. Remove frame from wall. Using long plastic anchor, insert T-screw until it extends 1/2" out of the wall. Re-hang frame on brackets, tilting the bottom of the frame away from wall in order to see T-screw. Align "T" head so that it fits directly into the center of the bottom frame extrusion.

While the frame should be nearly flush to wall, a little space between frame and wall is normal.



3 From below the picture frame, turn "T" screw 90 degrees using special "T-Lock" wrench. Frame is now secure.



Brackets support frame by hooking into the top of the frame extrusion. T-screw locks the bottom of the frame to the wall. The T-shaped part of the screw fits into the bottom extrusion horizontally. Once the T end fits into the track, turn the T-screw 1/4 turn. T shape will then sit vertically, locking frame to the wall. Only the T-wrench can turn the screw this way. (Very wide frames might need more brackets and T-screws for support)

